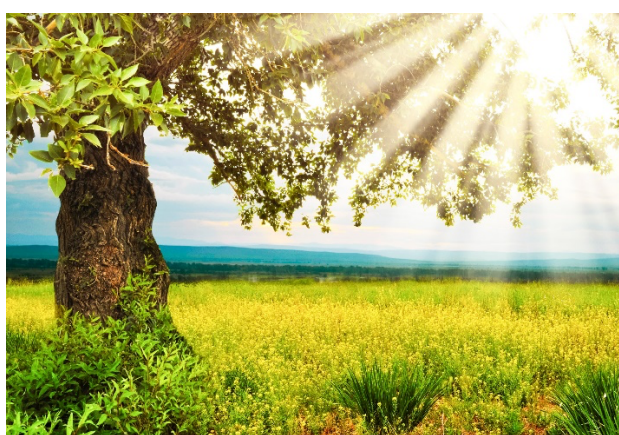




Special Educational Needs and Disabilities (SEND) Newsletter

SUMMER 2024



Welcome to the Summer 2024 Newsletter where you can find information on local and online support for children with SEND and their parents.

If you have any concerns about SEND matters or simply need a chat please do not hesitate to get in touch with us at email: send@rosherville.kent.sch.uk

Kind regards
Mrs Tracy Macfarlane
Inclusion Manager



Rosherville

Church of England Academy

Flourishing Through Faith and Fellowship to
'Achieve, Believe and Aspire'

KCC SEND Newsletter - for updates, resources and activities



You can find the latest KCC Newsletter here:

<https://mailchi.mp/kent.gov.uk/send-parent-newsletter-march-2024>

You can also sign up to receive these directly from KCC:

<https://kent.us5.list-manage.com/subscribe?u=9654cdd9763f0f2b8ece690a4&id=3677becda2>



Autism Education Trust



Every autistic child is different. Our training modules and materials have been designed to explore and build on these differences to **support all autistic children to reach their full potential.**

ll our materials have been developed in collaboration with **autistic young people, parents, practitioners and consultants** with expertise in autism.

<https://www.autismeducationtrust.org.uk/parents>

Child Mind Institute



Sensory Processing Issues Explained

Oversensitivity, tantrums, clumsiness: all could point to problems taking in the world

Writer: [Beth Arky](#)

<https://childmind.org/article/sensory-processing-issues-explained/>



Kent Educational Psychology Service

Kent Educational Psychology Service offers a free parent/carers consultation line with an Educational Psychologist.

The aim of this service is to provide advice and guidance to parents and carers to support children's wellbeing and learning.

Topics or areas that you may wish to discuss might include:

- Social and emotional issues
- Concerns about learning
- Family relationships
- Concerns about behaviour
- Daily routines including sleep

kepscommunitysupport@kent.gov.uk

If you would like to make use of this service please send a message to the email address above including the following information:

- your name;
- phone number;
- a convenient time to call (morning or afternoon)
- your child's education phase e.g. early years, primary school, secondary school; - a brief description of what you wish to discuss.
- the district in Kent in which you live.

We will do our best to respond within 10 working days but this is subject to availability, particularly during school holidays.



Rosherville

Church of England Academy

Flourishing Through Faith and Fellowship to
'Achieve, Believe and Aspire'

Support for parents at Ifield SMILE



**Gravesham Specialist Teaching
and Learning Service
Training Workshops
For Parents, Carers & Families
2023-2024**



For full details of workshops and support groups please visit:

<https://www.ifieldschool.com/site/data/files/users/27/files/90DA9647CBFB2ED4055D6BBC21A92356.pdf>



BEAMS support group meetings



FAMILY ADVICE SUPPORT GROUP – BEAMS

We are Beams will be running a Family Advice Support Group at Ifield Smile

10.00am – 12 noon

Tuesday 3rd October 2023

Tuesday 5th December 2023

Tuesday 6th February 2024

Tuesday 7th May 2024

Tuesday 2nd July 2024

This support group is led by our Family Advice Team at Beams and is for parent and carers of children with disabilities – everyone welcome.

To book a place, please telephone 01474 536924 and request a booking form. On booking, an email and contact telephone number must be given. Booking forms are also available on the Ifield website www.ifieldschool.com



KCC Early Help (support for families)

Providing services that can be accessed at a time and place that suits families to help them to do well, stay safe and resolve problems at the earliest possible opportunity, before they become more serious.

Early Help means taking action to support a child, young person or their family early in the life of a problem or as soon as it emerges.

<https://www.kent.gov.uk/education-and-children/early-help-support-for-families>

Kent School Health



Kent Community Health
NHS Foundation Trust

Kent School Health support children and young people aged four to nineteen.

They can help with a range of issues young people might face including:

- toileting
- sleep
- behaviour
- healthy lifestyle
- puberty and growing up
- emotional health and wellbeing

Parents can find further information on services offered and complete an online referral form here:

<https://www.kentcht.nhs.uk/service/school-health/>



OTHER PARENT SUPPORT INFORMATION

<https://www.autismsoutheast.co.uk/info/local-services-organisations/> a great source of information and events supporting autistic adults, children and their families.

<https://wearebeams.org.uk/> for information for parents and carers to help them make the best choices for their child.

<https://adhdfoundation.org.uk/> for people who live with ADHD, Autism, Dyslexia, Dyspraxia, Dyscalculia and Tourette's syndrome.

<https://www.ifieldschool.com/page/?title=SMILE&pid=11> for information and advice on understanding autism, ADHD, dyslexia, dyspraxia, dyscalculia, language and communication difficulties, Downs syndrome and behaviour management.

<https://www.kent.gov.uk/education-and-children/special-educational-needs> for KCC information, advice and support for families with special educational needs and disabilities (SEND), aged 0-25.

www.kentcht.nhs.uk/childrens-therapies-the-pod/ for details on resources and links for physiotherapy, occupational therapy and speech and language from the NHS.

www.kentcht.nhs.uk/service/school-health/counselling-and-emotional-health/ for mental health and well-being services from the NHS.